

NLM Research Data Resources

Clinical Trials.gov

<https://clinicaltrials.gov/ct2/home>

- Basic results for NIH and other clinical trials
- Data results include
 - Participant Flow
 - Baseline Characteristics
 - Outcome Measures and Statistical Analyses
 - Adverse Events

Find a study (all fields optional)

Status **i**

Recruiting and not yet recruiting studies

All studies

Condition or disease **i** (For example: breast cancer)

X

Other terms **i** (For example: NCT number, drug name, investigator name)

X

Country **i**

X

Community Health Maps

<https://communityhealthmaps.nlm.nih.gov>

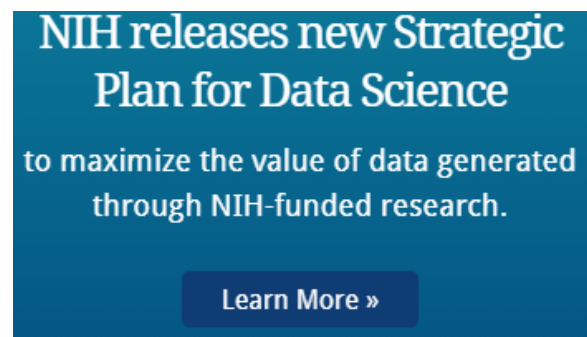
- Information about low/no cost mapping tools
- Increasing capacity within under-served communities
- Facilitate collecting and visualizing health data



Data Science at NIH

<https://datascience.nih.gov/>

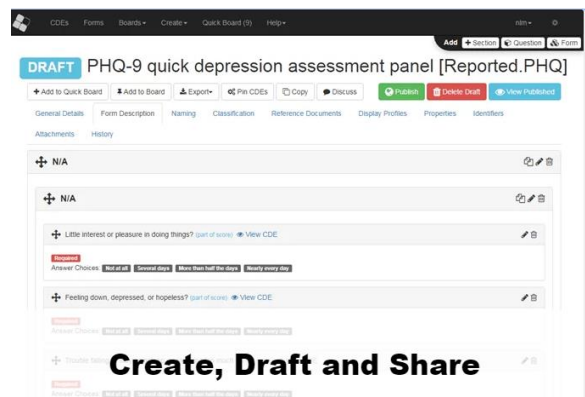
- Harness potential of computational and quantitative sciences
- Elevate impact of biomedical research



NIH Common Data Elements Repository

<https://cde.nlm.nih.gov/>

- Common data elements in clinical research, patient registries, human subjects
- Compare/ combine data from multiple studies and electronic health records



DRAFT PHQ-9 quick depression assessment panel [Reported.PHQ]

General Details Form Description Naming Classification Reference Documents Display Profiles Properties Identifiers

Attachments History

NIA

NIA

Little interest or pleasure in doing things? (part of score) View CDE

Answer Choices: **Not at all** Several days More than half the days Nearly every day

Feeling down, depressed, or hopeless? (part of score) View CDE

Think about harming yourself or others? (part of score) View CDE

Create, Draft and Share

NIH Data Repositories

https://www.nlm.nih.gov/NIHbmic/nih_data_sharing_repositories.html

NLM All of Us

<https://allofus.nih.gov/>

- Explore how lifestyle, environment, and biological makeup affect health and disease.
- Gather data from one million or more people living in United States



NN/LM RD3 (Resources Data-Driven Discovery)

<https://nnlm.gov/data>

- Foster learning and collaboration in data science
- Support for sharing, curating, and annotating biomedical data



NNLM NER e-Science Forum

RESEARCH DATA MANAGEMENT 2020 AND 2030

Have you ever wondered about research support methods and considered a data lab at your library? This year's keynote speakers are: Amy L. Numberger, the Program Head of Data Management Services at the Massachusetts Institute of Technology and Daniel Sheehan, the Head of GIS & Statistical Software Services at the Massachusetts Institute of Technology. This will be followed by lightning talks.

Data Classes

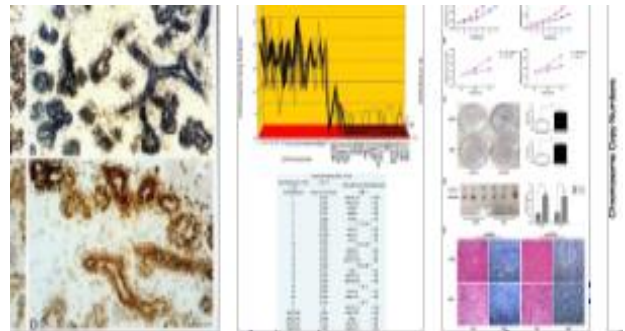
- [New England e-Science Webinar Series](#)
- [Clinical Information, Librarians and the NLM: From Health Data Standards to Better Health](#)
- [Biomedical and Health Research Data Management for Librarians](#)
- [NNLM Research Data Management Webinar Series](#)
- [Insider's Guide to Accessing NLM Data: EDirect for PubMed](#)

thesaurus

Open- i

<https://openi.nlm.nih.gov/>

- Search and retrieval of abstracts and images from the open source literature
- Includes charts, graphs, clinical images, and biomedical image collections
- Search by image
- Link to copyright license type



Partners In Information Access

https://phpartners.org/ph_public/health_stats

- Data on the health of a population
- National and local data sets
- Environmental and genomic data

The screenshot shows a website interface with two main navigation tabs: 'GENERAL' (highlighted in orange) and 'HEALTH TOPICS' (highlighted in grey). Below these tabs are two buttons: 'Open All' and 'Close All'. A list of categories follows, each with an orange plus icon in a square:

- PUBLIC HEALTH DATASETS**
- PUBLIC HEALTH WORKFORCE DATA**
- HEALTH DATA NEWS**
- COUNTY AND LOCAL HEALTH DATA**
- STATE HEALTH DATA**